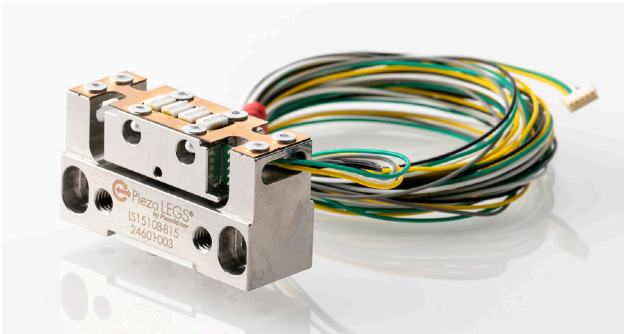




Acuvi LEGS® LS15 Piezo Linear Actuator



Key features

- Motor for linear stage mount
- Direct drive - backlash free
- Nanometer resolution
- No power draw in hold position
- Quick response & high speed dynamics
- Vacuum or non-magnetic vacuum

Product Description

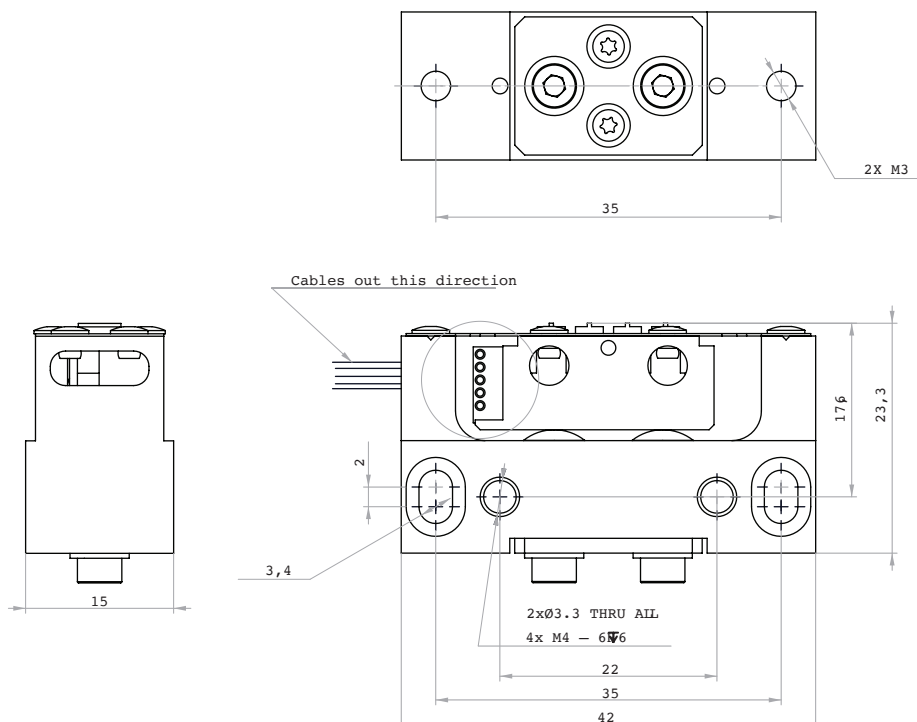
The Piezo LEGS 15N linear motor is intended for a large range of OEM applications. Design focus has been for ease of integration. The very high speed dynamics and nanometer resolution makes it ideal for numerous applications.

The LEGS technology is characterized by its outstanding precision. Fast speed and quick response time, as well as long service life are other benefits.

In combination with the nanometer resolution the technology is quite unique.

The motor is ideally suited for move and hold applications or for automatic adjustments of a linear stage unit. When the motor is in hold position it does not consume any power. The drive technology is direct, meaning no gears or lead screws are needed to create linear motion. This means the motor has no mechanical play or backlash. The Piezo LEGS LS15 linear motor is vacuum compatible.

Product Dimensions



Acuvi LEGS® LS15 Piezo Linear Actuator

TYPE	Vacuum (B)	Non-magnetic (D)
Maximum stroke	130 mm	
Maximum speed (driver dependent)	12 mm/s	
Minimum speed (driver dependent)	1 nm/s	
Max operating frequency	1.5 kHz	
Minimal incremental motion	<1 nm	
Stall force	15 N	
Holding force	>15 N	
Vacuum	10 ⁻⁷	
Operating voltage	42-48 V	
Power consumption	7 mW/Hz	
Mechanical size L x H x D	42 x 23.3 x 15 mm	
Weight without drive rod	70 g	
Operating temperature	-20 to +70°C	
Storage temperature	-50 to 85°C	
Non-magnetic	No	Yes
Material in motor housing	Steel	Non-magnetic

All specifications are subject to change without notice. Latest data sheets are available for download at acuvi.com

Controllers

PMD301 1-sxis micro-step driver/controller - max 3 kHz, RS485 or USB
PMD401 1-axis micro-step driver/controller - stackable PCB, max 1.5 kHz, RS485 or SPI

Accessories

Starter Kit PMD401 controller, motor cables, USB-to-RS485 cable, and power supply
Piezo Drive lab software downloadable from acuvi.com

